



PRESIDENT'S MESSAGE

Fellow Artists,

We are beginning the survey to help define our goals for the future of the association. The survey will be developed by several artists and jewelers. This survey is for the long term plan and may incorporate necessary changes to enhance our programs. You are encouraged to give your thoughts prior to the survey by e-mailing ggooch2@cox.net.

Please when the survey comes out take a moment and complete the survey. You may make comments provided in the comment section. If you wish to remain anonymous just leave the name blank and drop the survey by the gallery, we will have an envelope there for Surveys.

Jeff Sewell gave our January 15th Demonstration. We had a great turnout and everyone enjoyed his style of painting. Jeff kindly raffled of an original painting! What a deal. Thanks to Pattie Prather, 1st Vice President who has obtained outstanding artist for our meeting demonstrations.

The February demonstration was given by Robin Hall, we had a great turnout and I was told it went well. I was very disappointed that I was unable to make it.

Another new board member, Sheila Shephard, 2nd Vice President has brought new life to our website; coupled with Jim Proett they make a great team. Please take the time to take a look. She has added a new feature of a Member Profile, which is excellent. Also, back is our showcasing members work with show winner's images. One additional reason to check out the website is to see how you can win a prize! Look for the hint! Sheila has also taken on the task of managing the SC Arts & Crafts Fair. This is our main fund raiser to support the Gallery. I encourage our artists to participate by showing your work. Contact Sheila if you are interested.

As most of you have heard, we are suspending the Plein Air, Paint San Clemente this year. We are looking to retool the event or replacing it with a different program. I wish to acknowledge all the hard work the Paint SC committee has put in throughout the years. It has been an arduous task and has required an immense amount of work. A shout out to Pam Hill, who created and chaired the event for the past fifteen years. The committee and many volunteers made it a very special San Clemente City event and will be missed.

Sincerely, George

JEWELRY NEWS

At the February 1 meeting, the board approved an idea Rose Walker, Doris Weinbaum and Mary Scott had discussed to reformat the SCAA Gallery sign-in sheet. The pilot program will begin on March 1 and gallery sitters may encourage guests to give their email address with the incentive of being entered in a drawing to win a piece of art. With these email addresses we will be able to

promote gallery activities. Rose has volunteered to provide the first piece of jewelry for the drawing. Please look for the new sheets and encourage guests to provide their email and enter the drawing when you gallery sit.

The jewelry artists are going to host a Jewelry Boutique on Sunday, April 9, 2017 in the gallery from 9 am – 1:30 pm. Mark your calendars now and we hope to see you then!

The seven switches for the jewelry cases have been identified with more noticeable signs – please be sure to turn on all seven when you gallery sit.

We are always looking for new jewelry artists – please contact one of us if you are interested or know someone who might be.

Thanks, as always, for selling our jewelry!

Doris Weinbaum 949 542-2924

Rose Walker 949 375-1079

SCAA Biography and Photo Book News

The Photo-book is up to date.

All members can submit a brief Biography of their Art-work and summarizes this on an "A" size paper. (8x11 in.). This will then placed in the Portfolio book! The information is helpful and important for the Gallery Sitters if a customer wants to know detail info on one particular artist. Please, I encourage each artist to complete the Biography and mail to:

SCAA attn. Bio Snap Portfolio

P.O. Box 227, San Clemente, CA 92674

The Biography can also be dropped of at the Gallery, I will collect them and place each one into the Portfolio Book.

All the best,

Katharina Stute

Biography and Photo - Book Chairman

New Members:

Evelyn Hart

Robert and Rudi Wilson

Thank You....
to our volunteers gallery sitters

Jacqueline Price, Leslie Curran

Linda Dette, Mary Bierce

Patti Prather

MARCH DEMONSTRATOR

SUNDAY, MARCH 12 , 3pm

CYNTHIA BRITAIN



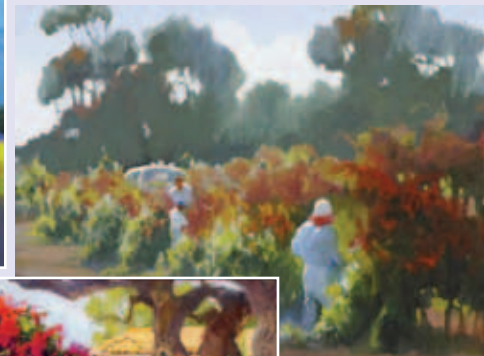
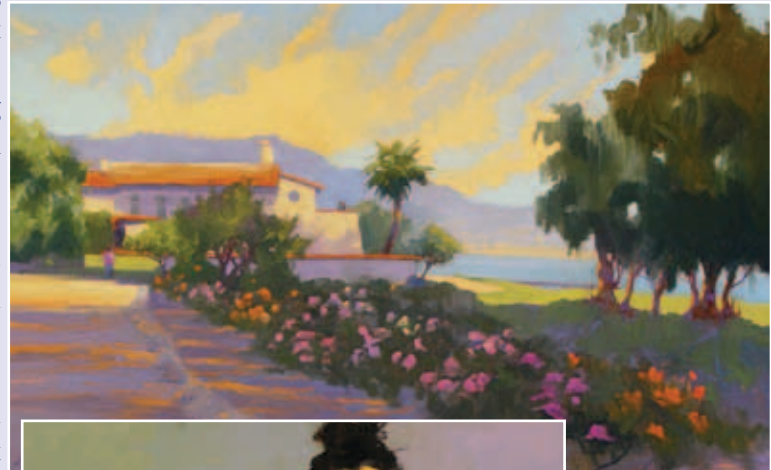
“My intent is to express the intrinsic truth and beauty of my subject. To reveal the power or presence of spirit in a place or person. I am inspired by what I feel and by what I see...They reflect one another.”

Cynthia's favorite activities are twofold - painting and spending time in nature. It is the combination of these two passions that have resulted in her becoming an award winning plein air painter. “I can't imagine a more gratifying experience than painting outdoors while listening to the birds sing and feeling the sun on my face.”

While majoring in fine art at Fullerton College, Cynthia was introduced to the Impressionist painters. She continued her studies at UCLA and Putney College of Art in England. Both the French Impressionists and the early California Impressionists deeply influenced the direction and concentration of her work.

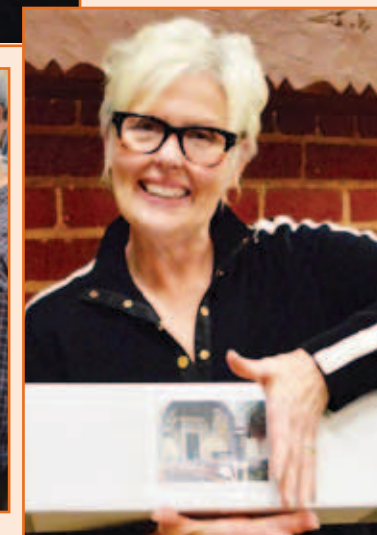
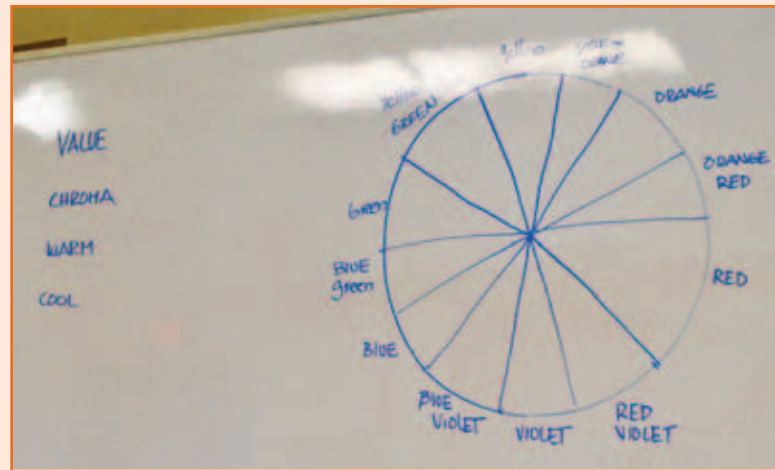
Europe, the Middle East, the Mediterranean, and the Yucatan Peninsula area are all locales where she has enjoyed painting, but California holds a special place in her heart. “Future generations will not have the experience of this quickly disappearing natural landscape. I aspire to create a permanent repository of these unique places in my paintings.”

Cynthia Britain's work has been shown at The Laguna Art Museum, The Orange County Museum of Art, and the San Diego Museum of Art, where she was awarded a Gold Medal. Her work is shown in corporate and private collections throughout the world.



Robin Hall - February Demonstrator

Robin Hall taught us value, chroma, warm colors, and cool colors. How to make your colors not end up looking brown or muddy. What to use and what not to use. Many examples of how to keep your color true.



Vicky Killeen won the poster at the demo.

Wendy Dodd led MAP's 'Painting Olaf' class February 4th. Wendy is a veteran, mother and active military spouse who joined MAP recently and immediately jumped in inspiring our group of parents and children at San Onofre Event Center. Volunteers assisting Wendy were: JoAnn Christman and Sandy Beeler. MAP's February 18th's drawing workshop will be presented by Alan Nowell assisted by Mary Clare Doyle. Alan's workshop will cover basic drawing techniques using animation characters: Belle and Lightning McQueen. March workshops will be led by Maurine Lacher, painting for children, and Mike Marchisotto, 2-D animation for older children and adults. Check out our Facebook page for more information on future workshops.

Also in March, MAP has planned another paint and sip event organized by 1st Combat Engineer Battalion. More on this event later! If you'd like to get involved in this art outreach program sponsored by San Clemente Art Association please contact: Sandy Beeler at map_scaa@cox.net or 949 492 0994.



RETIRED MILITARY SCAA ARTISTS WANTED!

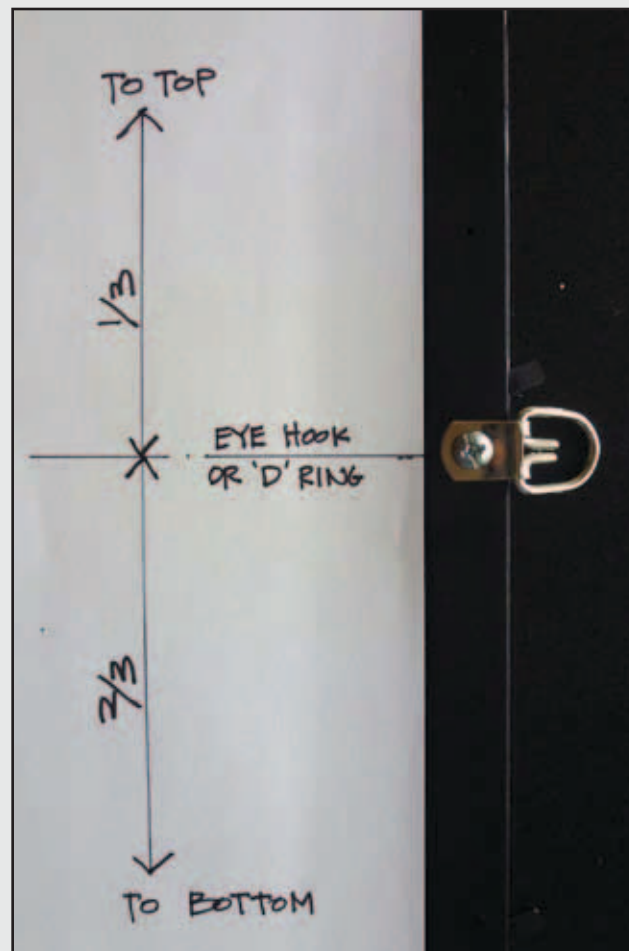
MAP invites retired military SCAA artists to join a new workshop offered on Camp Pendleton base: 'Brushes, Brats and Brew'. In an effort to reach adult active military, MAP has joined the Family Readiness Officer of 2nd Battalion 4th Marines (City of San Clemente's adopted battallion) to offer a new open studio workshop. Military artists bring their own setups and projects to paint along

side SCAA artists in open studio with no instruction. We hope that this relaxed environment will provide time for conversation and camaradery. Studio time will end with Brats and Brew for all artists! If you are interested in participating in this open studio event please contact: Sandy Beeler, MAP Chairperson, at map_scaa@cox.net or visit MAP's Facebook page.

HOW TO WIRE A PAINTING

1. Attach “D” ring or eye hook to frame approx. $\frac{1}{3}$ distance from the top of the frame.

2. Securely attach wire to “D” rings or eye hooks.



3. Adjust top of wire so it is approx. 3" from top of frame at center from where it is hung.

4. Wrap wire around wire to finish.

