

## PRESIDENT'S MESSAGE

### *Fellow Artists,*

Welcome back to another year of great art and comradery. In the past we have seen artists grow and win competitions. I can't tell you the joy it is for me to see new winners be called and the expression on their faces as they hear their name called.

We are doing some exciting things with the MAP program. Sandy Beeler has put her heart into this as well as many of you. Our Marine Families have benefited from all the out flowing and help given by many, my thanks to Rich and Patty Herdell from the SC Art Supply for providing a space for the workshops.

The Art Fair is looking for someone to take over the handling of the Vendors; Jennifer Friend has decided to step down and would be able to pass on the information. As always Mike Ayer and I will be involved in the Fair doing all the tasks that help make the fair the success that Jennifer has helped make it.

The Paint San Clemente Team is already holding meetings for the upcoming year, if you want to get involved contact Pam Hill. We need plenty of volunteers as this is our main fundraiser.

*Thank you all for putting up with me for another year,*

George

## GALLERY NEWS

**HAPPY BIRTHDAY TO US!!**  
**NOVEMBER - 63rd YEAR!**

The club was started in November, 1953 to encourage the awareness of the arts. As San Clemente has grown, we have played a viable part in its cultural maturity.

### FALL JUDGED SHOW

There is always a lot of excitement over the Fall Judged Show. Every time you visit the gallery, you will notice something new you missed before. We have such a nice mix of mediums, subjects, techniques and ideas. The beauty of gallery sitting is, you can really take in all the pieces. Our members have done themselves proud.

We always have a lot of out of state visitors this time of year, and the downtown merchants have special Holiday activities.

### *Mark your calendar for the new Fall Show:*

**Registration:** Saturday, November 5th, 10am - noon (sharp)

**Reception:** Sunday, November 6th, 2pm-4pm

**Daylight Savings Time Ends, set clock back one hour.**

It would be nice if all winners were there to accept their awards. There is a lot of work that goes into these shows and receptions. Please show your appreciation by attending and participating.

### **CHRISTMAS PARTY WILL BE A BLAST!**

**Mark your calendars:**

**When:** Wednesday, December 14th,

**Where:** Talega Golf Course (1st time at this location)  
990 Avenida Talega

**Time:** 5:30pm-9:30pm

Bring a wrapped "White Elephant" (means something you don't want) for our auction. Worth a lot of laughs! Some guests were trading with each other and there were some nice items. Our auctioneer's will be in fine form and keep everyone in stitches.

Live music! Food is excellent!

**TICKETS:** \$35.00 Call or email Mary Bierce for tickets.  
366-1601 or biercefamilly@yahoo.com.

**We will confirm location details shortly by email.**

*Should be an exciting Fall & Winter Art Season.*

Gallery Executive Committee

**Pick up your new phone directory  
at the gallery.**



# JEWELRY NEWS

The jewelry group has new Co-Chairs as of September 1: **Rose Walker and Doris Weinbaum**. Rose is a semi-retired nurse practitioner and health care executive. She is a jewelry artist and paints using both watercolor and acrylic. She is active in the gem and mineral club and has always been interested in the arts. Doris is the former owner of a bead shop in Oak Park, Illinois and has continued to work with beads since moving to California while making and selling jewelry and teaching beadwork nationally and locally. We are pleased to continue Katharina Stute's work of leading the jewelry artists of the SCAA.

Many thanks to all of the gallery sitters who sell our jewelry. We know many of you have also purchased items for yourselves. The members of the jewelry group enjoy making and selling jewelry and we appreciate your support.

As a reminder, there are 7 light switches for the 4 cases. Each case has a light at the top and lights along the outside edges of the shelves. If you take a piece out to show someone, please put it back with the price visible. If you sell something, please call the artist - **we love knowing!**

If you, or anyone you know, is interested in joining our group, please give us a call. New members are welcome.

Doris Weinbaum 949 542-2924

Rose Walker 949 375-1079

## Show Additional Art In The Gallery

**You can volunteer for extra sittings that are needed for the gallery.**

When you volunteer, you can bring in 1 extra piece to display on the easel. You still pay 20% commission to the gallery. The sale goes through the gallery like any other piece. You will receive your check in the mail for that sale. Please remember to take your art home at the end of your shift.

Our gallery is in need of more volunteers to sit for us to keep it open daily. E-mails are sent out to all members when help is needed. At the time of renewing memberships, everyone received a check list of duty options; one of which is volunteering to help the gallery. Please support SCAA so we can be there for our San Clemente patrons. Training is provided for those unfamiliar with procedures. There are detailed instructions at the desk and phone numbers for assistance.

**Thank You....** to all our volunteers that kept our gallery doors open during the current show:

**Jeanne Reiss, Mary Bierce, Mary Scott, Winfield Scott**

# Biography and Photobook

The New Year for the SCAA started and all members can submit a short Biography of their Artwork summarized on an "A" size paper (8"x11").

The Bio should not exceed 3 pages, which will be placed in the Portfolio Book.

**Please send all information to:**

**SCAA attn: Bio Snap Shot Portfolio**

**P.O. Box 227, San Clemente, CA. 92674**

Katharina Stute

Biography and Photo Book Chairman

## Card Rack News

**Members –**

**Please don't move cards on the rack.**

You may think you are doing your friend a favor by moving their cards to the top row, but it looks like they "stole" the spot from the cards that were moved out of the way. Or you may think the rack "looks better" with the "cute" cards in a higher place, but rack members are only allowed 2 spots + a third on the bottom.

I have a "map" of the rack and inventory the rack at least once a month. When I do this, I move cards back to their original spot and inform the member what happened to their cards. When a member decides not to continue with the card rack, I give their spot to a person who has been following the rules.

If I can answer any question, feel free to call or email me.

*Christy MacBride*

Card Rack Chairman

bcabhart@cox.net

949-498-3949



Sheila Shepherd and Sandy Beeler had a booth at the Village Art Faire. They had a wonderful day meeting new people and promoting the San Clemente Art Gallery.

**MAP is in full swing with art classes for active military and their families. Classes benefit both the students and the SCAA volunteer teacher. Students have the opportunity to learn something new and creative. Artist teachers have a chance to tune up their teaching skills. All in a fun, no stress environment!**



## **Members get the word out!**

In addition to the classes below, November 10th, MAP has been invited to participate in a couples event sponsored by 1st Combat Engineer Battalion. The event is designed to promote healthier relationships. MAP NEEDS VOLUNTEERS TO HELP OUT AS THIS WILL BE A LARGE GROUP OF PAINTERS! PLEASE CONTACT: Sandy Beeler at map\_scaa@cox.net.

**For more information LIKE our new Facebook page by searching: Military Artist Program of San Clemente Art Association**

All art workshops, supplies and materials are provided free of charge for active military and families.

**Veterans:** are invited to attend though space is limited. Please bring your own supplies and make a donation to this Military Artist Program for each class attended.

**FOR INFORMATION AND TO RESERVE A PLACE IN A WORKSHOP, PLEASE CONTACT:**

**Sandy Beeler: 949-492-0994 or map\_scaa@cox.net.**

*MAP, Military Artist Program, is sponsored by SCAA, SC Art Supply, San Clemente Sunrise Rotary and generous donations by private individuals. In addition to these Tuesday night classes held at the San Clemente Art Supply, 1531 N. El Camino, SC. Saturday afternoon classes will be offered on Camp Pendleton (facility TBD).*

**Take note there will be a SPECIAL FRIDAY NIGHT CLASS IN NOVEMBER. SEE BELOW.**

### **TUESDAY, OCTOBER 25**

**6-8 pm - SC Art Supply  
Oil Painting with Steve Kell**  
*Open to adults and older children  
(when accompanied by an adult)*

### **OCTOBER 29**

**3 - 5 pm - Camp Pendleton  
Oil Painting with Maurine Lacher**  
*Open to adults and older children  
(when accompanied by an adult)*

### **FRIDAY, NOVEMBER 4**

**6-8 pm - SC Art Supply  
Traditional 2-D Animation  
with Mike Marchisotto**  
*Open to adults and older children*

### **NOVEMBER 5**

**3 - 5 pm - Camp Pendleton  
Traditional 2-D Animation  
with Mike Marchisotto**  
*Open to adults and older children*

### **TUESDAY, NOVEMBER 15**

**6-8 pm - SC Art Supply  
Mono-print process  
with Sandy Samaha**  
*Open to adults and older children*

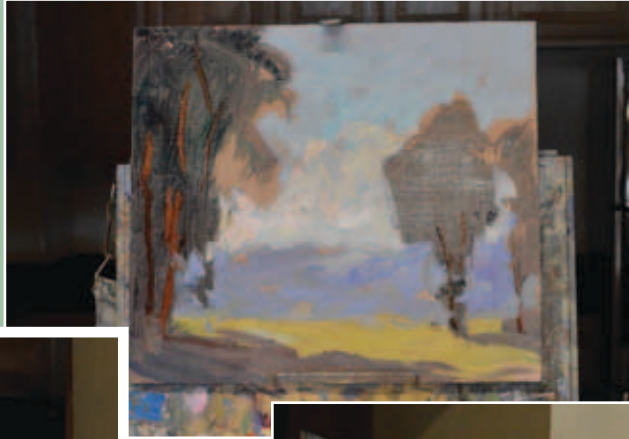
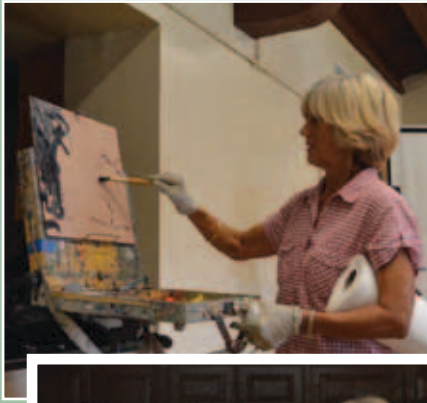
### **NOVEMBER 19**

**3 -5 pm - Camp Pendleton  
Oil Painting with Alan Nowell**  
*Adults only*



# OCTOBER DEMONSTRATOR: TONI WILLIAMS

Sunday, October 9, 3pm



[www.toniwilliamsart.com](http://www.toniwilliamsart.com)