



San Clemente Art Association

# Sketch Pad

P.O. Box 227 • San Clemente, CA 92674

Issue 200

April 2016

## PRESIDENT'S MESSAGE

Clocks have been set ahead, spring is on the way, and it looks like the predicted severe El Nino weather hasn't quite lived up to its expectations. As artists, we all have a special connection to our community and environment, so we should continue to be conscious of the current drought situation and conserve our resources in any way we can.

Thank you to all who attended last Sunday's demo from master artist John Cosby. He is more than just an accomplished and important artist, he is also an all around great guy and his presentation was both informative and entertaining. I don't know about you, but I learn many new things at each and every one of our artist demos. It's always refreshing to see how others use different techniques and methods to create extraordinary works of art!

Don't forget Paint San Clemente event begins on June 18 and I invite everyone to start "brushing up" for this show. Thanks to all who volunteer, plan, and participate in putting this on every year. It is no small undertaking and involves a lot of hard work by individuals who deserve our thanks and gratitude.

Next month demo artist will be Jeff Sewell, an award winning painter who is also a signature member of the Laguna Plein Air Painters Association. On May 15, yours truly will be the demo artist. Looking forward to being there!

See you all next month.

Tom Swimm

## GALLERY NEWS

### "IT'S ARTIST'S SEASON!!"

#### APRIL:

Spring has sprung and so has our beautiful SPRING JUDGED SHOW with 103 pieces. It was a great Reception! This show will coincide with the SC Garden Club one-day event on Saturday, April 9th. There will be hundreds of people going through the community center that day. Our members are invited to paint the floral entries in the auditorium. There will be public choice voting on the florals and the artwork. There also will be a SC Art Supply gift Certificate for the 1st place winner. Please contact [scaa.info@cox.net](mailto:scaa.info@cox.net) or 949 369-

0260 if you are interested in participating. Mark your calendar!

#### APRIL-MAY: SUMMER JUDGED SHOW:

Registration is Saturday April 23rd (10am-12) and the next day is the Reception on Sunday April 24th, (2:00-4:00pm). We invite 2 judges from the Festival of Arts to judge using our point system. "Who is the next Best of Show?" You? Judges' sheets are always in the top drawer of the desk after each show.

#### JUNE: "PAINT SAN CLEMENTE"- 15-YEAR ANNIVERSARY - Sign up early!!

Alan Nowell designed a very special prospectus for this 15th year. You may pick up the printed version at the gallery. It is also on our website [paintsanclemente.com](http://paintsanclemente.com) if you want to download it. Yes, there will be pros, but we encourage our members to be part of this event. Most of the Paint-outs around the country are invitational. Ours isn't because we want to encourage all levels of artists to participate. We also are one of the few to offer prizes totaling \$13,000. Many of the shows only have ribbons and the artists need to sell their paintings to make it worthwhile. Several years ago, Dorothy Kuhr tried it and named her painting "My first and last Plein air Painting" and guess what? She sold it! We do have a lot of fun and will be calling on the members to help on the committees. We will need lots of help on Saturday, June 18th check in day and the Quick Draw. On Saturday June 25th the paintings are brought in, registered, judged and displayed outside on the lawn. Later they are re-hung in the auditorium for the Gala (the party of the year) that evening. Be sure to participate in some or all the activities.

#### WE NEED YOUR HELP!

As you know, our Association gives back to our members. The funds that come in for each and every Art Show is given back with ribbons and cash awards. Naturally we have bills to pay, rent, insurance, utilities, judges, top demo artist's, receptions, directories, etc. Our main fund raiser for the kids is Paint San Clemente. We would appreciate any donation. A \$100 donation will include 2 tickets to our Gala plus your name will be on our posters if sent in early.

Please send to: Pam Hill, 38 Gema, San Clemente 92672. Over the years SCAA has given the public school students and senior's thousands of dollars for Art supplies and Scholarships. They truly appreciate what we do.

#### "AN ARTFUL TASTE"

The food at the Gala is delicious! It is a great evening

with awards, live music and surrounded by all the beautiful artwork done that week. This year again we are also going to present the High School Scholarships to the winning students at the Gala. Tickets are only \$35 and that includes food and wine. If each member buys a ticket or sells tickets, it will be a great fund raiser for us. We also need business Sponsors.

### **“GALLERY SITTING”**

Please sign up for extra gallery sitting. With many artists from out of town, the members will need to make up for the difference. Volunteering is the only way the association can exist. Thanks!

Pam Hill  
Gallery Chairwoman

**Artery. . . . .**  
*The study of paintings!*

## **JEWELRY CASE**

If you read the Almanac Calendar and believe the nice little verses written about the weather 100 years ago, like: *“If the summer comes to early the next winter will hit us hard.”*

Now, how this compared to our resonantly weather, hot in February and cold in March. May our nice, new displayed Jewelry in the Gallery always bring the sunshine and curious visitors to check out what happens here!

Just a reminder for the new and many future Jewelry Artists: **You have to be a member of the SCAA first and wait one Jewelry session, after you become a member, and then you can join our Jewelry group!**

To get detailed information on the above, please pick up the registration sheet located in the Gallery, and if you have further questions, please call me:

Katharina Stute, 949. 364.6905  
Jewelry Case Chairman

### **PS: Dates to remember:**

Friday April 22nd: Jewelry exchange and pick up from 1:00 to 2:30 PM.







**\*\*UPDATED\*\***  
**SCHEDULE**  
**FOR MILITARY**  
**ARTIST**  
**PROGRAM**

**FREE ART WORKSHOPS**  
**FOR MILITARY AND SPOUSES**

MAP, Military Artist Program, is offered to military and their families free of charge. Sponsorship is provided by San Clemente Art Association,

**Drawing Workshops**

March 19, Saturday, 3 - 5 PM at San Clemente Art Supply

April 2, Saturday, 3 - 5 PM at San Onofre Transition

Readiness & Career Cntr. Bldg. 51919

both classes taught by artist,

Alan Nowell [www.pleinairwest.com](http://www.pleinairwest.com)

**Basic Painting Workshops**

April 12, Tuesday, 6 - 8 PM and April 23, Saturday, 3 - 5 PM

at San Onofre Transition Readiness & Career Cntr.

Bldg. 51919

both classes taught by artist,

Steve Kell [www.stevekell.com](http://www.stevekell.com)

**TO RESERVE YOUR SPOT** and for information regarding MAP  
contact Sandy Beeler at 949 492 0994 or email: [map\\_scaa@cox.net](mailto:map_scaa@cox.net)

Artwork courtesy of Rick Delanty

# APRIL DEMONSTRATOR

## Jeff Sewell, Sunday, April 10

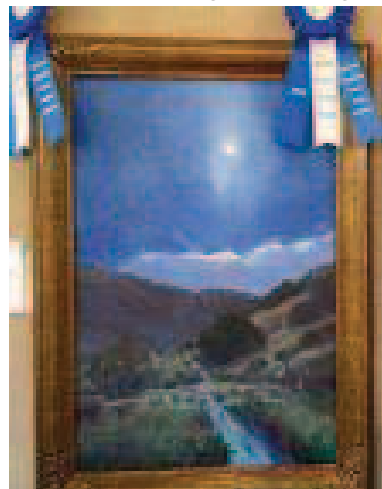
Artist Jeff Sewell was born and raised in Southern California. Jeff is well known for his Paintings of California scenery, although he spends many trips throughout the year traveling to paint the great Western scenery of Colorado, Utah and Arizona. He paints predominantly “en plein air” and also enjoys developing works in his studio.

Jeff was honored to have his works displayed at the Irvine Museum, California. “On This New Morning” Shadows & Light Show 2015 show), & “Oaks Of Glory” part of the (Then & Now-100 years of California Impressionism -2014).

Jeff is an Award winning American Artist, focusing in California Impressionism. He has won many awards in the past years - The 2015 Laguna Beach Plein Air invitational “Collectors Choice Award” and “the Randy Higbee Award of Excellence”.

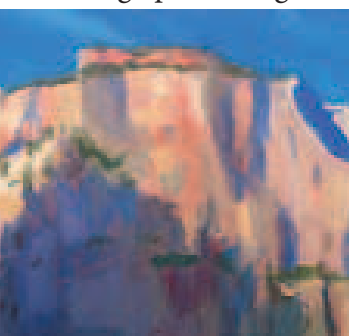
Jeff has been recognized with Place & Honorable Mention Borrego Springs Plein Air In-2011 Jeff Recieved “Collector-Plein Air invitational. In 2013 Beach Plein Air invitational. many Plein Air Events.

Jeff is a distinguished Signa-



Glen Dean, Michael Situ and Michael Obermyer.

Growing up in Orange County has attached Jeff deeply to the ocean life style.



Jeff is an Award winning American Artist, focusing in California Impressionism. He has won many awards in the past years - The 2015 Laguna Beach Plein Air invitational “Collectors Choice Award” and “the Randy Higbee Award of Excellence”.

Jeff is an Award winning American Artist, focusing in California Impressionism. He has won many awards in the past years - The 2015 Laguna Beach Plein Air invitational “Collectors Choice Award” and “the Randy Higbee Award of Excellence”.



Jeff is a distinguished Signa-  
ture Member of the Laguna Plein Air Painters Association. He also serves on the LPAPA Board of Directors as the “Director of Education and Mentorship” helping to pass on the history and importance of California Impressionism to hundreds of students each year with a program he instilled called “The Plein Air Project”.

Jeff studied art at USC and Irvine Valley College, yet finds his Greatest influence is from the works of Past Master Impressionists such as Edgar Payne, William Wendt, Joaquin Sorrolla, Maynard Dixon and countless current living Impressionists, artists Jeff Horn,

Glen Dean, Michael Situ and Michael Obermyer.

Growing up in Orange County has attached Jeff deeply to the ocean life style.

“My dream days start with a surf in the morning and then spending the day with my feet in the sand painting seascapes and beach scenes”.

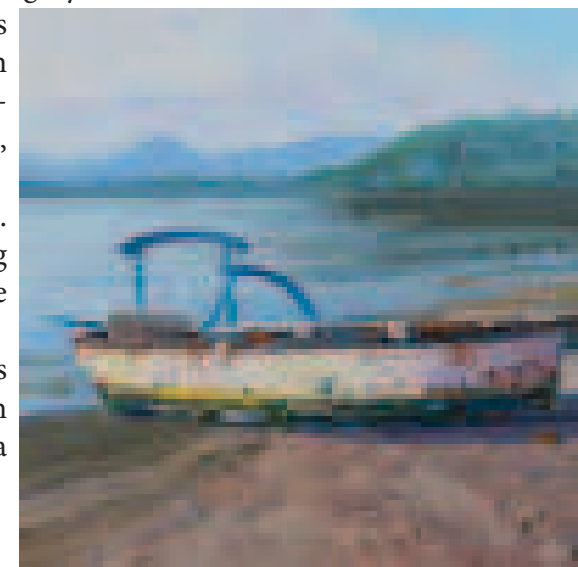
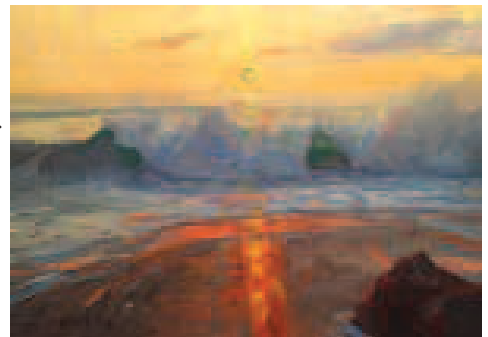
For over four decades Jeff has appreciated this area of great diversity eventually finding an even deeper connection with Southern California when painting “en plein air”.



1st, 2nd, 3rd Ribbons in the invitational. In

“Collectors Choice” during the prestigious Laguna Beach “Laguna Canyon Foundation Award” Laguna He has also recieved numerous other awards in

Jeff is a distinguished Signa-  
ture Member

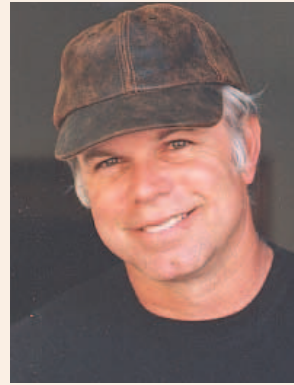




# MARCH DEMONSTRATOR

**JOHN COSBY**

**Sunday, March 13, Community Center, Ole Hanson Room**





## **MARCH JUDGED SHOW WINNERS**

### **Best in Show**

54 Kathy Eichler

Bubbles

### **Oil/Acrylic/Land/Sea**

1st	89	Robert Schwenck	The Mary Day-Camden,ME
2nd	52	Alan Nowell	Blue Truck
3rd	34	Patrick Howrigan	Spanish Bay
HM	47	Mary Holt	California Spring Hills
HM	75	Lynn King	Prickly Fruit
HM	7	Evelyn Fernandez	Pacific Waves
HM	26	Gwenith McIntire	Rockledge, Laguna Beach
HM	74	Lynn King	A Matter of Time

### **Oil/Acrylic/Other**

1st	44	Michael Downey	A Basket of Apples
2nd	66	Sharon Syfrett	Movement
3rd	12	Maryana Espe Wagor	Hydrangeas & Oranges

### **Watercolor**

1st	73	Susan Winslow	Todos Santos
2nd	78	Bill Gibson	Winter Sycamore
3rd	76	Bill Gibson	San Clemente Reflections
HM	77	Bill Gibson	Orvieto Stroll

### **Portrait and Figure**

1st	8	Bob Ross	Buddhist Monk in Training
2nd	71	William R Brion	I think I've Got a Bite
3rd	48	Wojciech Koshowski	Eskimo Beauty
HM	21	Deborah Weinstein	Loveseat
HM	36	Crisynda Buss	Retro Gaze
HM	57	Myoung Park	Figure 1

### **Photography and Graphic Arts**

1st	17	Paul Lawrence	Novato Lakeside
1st	13	Susan Brown Matsumoto	Rhythm of Live
2nd	10	Bob Ross	Stare
3rd	3	Winfield Scott	Long Day

### **Pastel & Mixed Media**

1st	70	Ruth Yuhas	Overcast
2nd	87	Susie Cartt	Variation on a Theme
3rd	46	Patti Prather	Calafia Morning

### **3d and Crafts**

1st	53	Gregg Lipanovich	Box of Rocks
2nd	98	Jan Merryfield	Underwater Magic
3rd	63	Derith Madden	Ocean Waves

### **Jewelry**

1st	902	Irene Wetsman	Buzzing Around
2nd	903	Doris Weinbaum	Chains, Chains, Chains

**Judges:** Georgio Dimichina, and Marie Tippetts

***Thank you to our volunteers for keeping our gallery doors open***

**• Bill Brion • Cecelia Lance • Elizabeth Stocks • Jo Ann Christman  
• Kenneth Van Kampen • Mary Bierce • Patricia Hoskins**



# March Judged Show Reception





# DATES TO REMEMBER

## Military Arts Program 2016

### Drawing Workshops:

Saturday, March 19, 3:00 - 5:00

San Clemente Art Supply

1531 N. El Camino Real, San Clemente, CA

Saturday, April 2, 3:00 - 5:00

San Onofre Transition

Readiness & Career Cntr. Bldg. 51919

Both classes taught by Alan Nowell

### Basic Painting Workshops:

Tuesday, April 12, 6:00 - 8:00

Saturday, April 23, 3:00 - 5:00

San Onofre Transition Readiness &  
Career Cntr., Bldg 51919

Both classes taught by Steve Kell

## JUDGED SHOW

Registration - Sat., April 23, 10am - noon

Reception - Sun., April 24, 2pm-4pm

Pick up work - June 10, noon-4pm

**Friday April 22, 1:00 - 2:30**

Jewelry Exchange & pick up

## August 20-21

San Clemente Art and Craft Fair

## Paint San Clemente Plein Air Competition

June 18 - September 1

June 18 - Check in & Quick Draw

June 25-26 - Plein Air on the Lawn

June 25 - Gala Evening

September 2 - Pick up Work

