



San Clemente Art Association

Sketch Pad

P.O. Box 227 • San Clemente, CA 92674

Issue 195

November 2015

PRESIDENT'S MESSAGE

Welcome to all of our new members, as well as those who continue to be a part of our growing organization! It's been a banner year for each of our annual events and you should all be proud of the contributions that each of you make for our continued success.

We had another inspiring and educational demonstration last week, this time by master plein air painter Jim Wodark. His techniques for capturing light and atmosphere in his landscapes are quite innovative, and he has a very comprehensive knowledge of many of the early California artists. I encourage all of you to attend these monthly events, it's a chance to gain new insight into various working methods, and it's also a lot of fun getting to socialize with other members in the group.

The new Directories are now available to each member and available in the Gallery. If you haven't gotten yours yet, please come by and pick it up. The Directory is a wealth of information for the all of the scheduled upcoming events through next year, as well as a guide describing the history and purpose of our organization. It also features a very detailed description of our Art Gallery policies.

Best wishes to all of you in your artistic endeavors for the remainder of the year, and a big thank you to all of those who continue their volunteer support!

Thank you,
Tom Swimm

GALLERY NEWS

**HAPPY BIRTHDAY TO US!!
NOVEMBER – 62nd YEAR!**

The club was started in November 1953 to encourage the awareness of the arts. As San Clemente has grown, we have played a viable part in its cultural maturity.

FALL JUDGED SHOW

There is a lot of excitement over the Fall Judged Show. Every time you visit, you will notice something new you missed before. There is such a nice mix of mediums, subjects, techniques and ideas. The beauty of gallery sitting is, you can really take in all the pieces. Our members have done themselves proud.

We had a great turn out for the reception/awards. Great competition on hors d'oeuvres. Mary Scott won 1st with her pumpkin "throw-up!"

Due to low participation last year of the small works show, we have removed it and replaced it with a Regular Judged Show. That includes Judging by categories with a Reception and awards. We always have a lot of out of state visitors this time of year, and the downtown merchants have special Holiday activities.

Mark your calendar for the Reception November 1st from 2:00pm –4:00pm. It would be nice if all winners were there to accept their awards. There is a lot of work that goes into these shows and receptions, please show your appreciation by attending.

CHRISTMAS PARTY WILL BE A BLAST!

Date unknown - will contact everyone when known!
Bring a wrapped "White Elephant" (means something you don't want) for our auction. Worth a lot of laughs! Some guests were trading with each other and there were some nice items. Our auctioneer's will be in fine form and keep everyone in stitches. Price is \$35.00. Call or email Mary Bierce for tickets & further info. 366-1601 or biercefamilly@yahoo.com.

We will confirm location details shortly by email. Should be an exciting Fall & Winter Art Season.

Pam Hill
Gallery Chairwoman for the 100th year

Lets Sketch!

Tuesday, October 27th at 11:00 am Casa Romantica
415 Avenida Granada
San Clemente. Free parking
\$5.00 admission fee.

Built in 1927, perched on a bluff overseeing the historic San Clemente Pier, the magnificent Casa is a living demonstration of California history, culture and ecology.



Everyone is welcome...Bring your friends We are now a Meetup group. Join us at www.meetup.com/SanClementeSketchers. Join our Face book group "San Clemente Sketchers.....just for fun".

NOVEMBER DEMONSTRATOR

SALLY STRAND

Sunday, November 8, 3 p.m. Ole Hanson Room

A native of Colorado now residing in California, Strand has been exhibiting professionally as an artist for over 30 years. Strand was inducted into the Hall of Fame in 2007, the highest commendation of the Pastel Society of America, NY. She is the recipient of numerous top awards, including the PSA Master Pastelist distinction and the IAPS Master Circle Honor. Her solo exhibitions in galleries and museums include a one-person retrospective of pastel and oil paintings at the Bakersfield Museum of Art in California.

Widely published in books and magazines internationally, her work is also represented in many corporate and private collections. Strand studied at the American Academy of Art in Chicago and at the Art Students League and National Academy of Design in New York. She earned a BFA degree from the University of Denver and an MFA from Laguna College of Art and Design. Strand teaches workshops and master classes internationally and around the country.

Workshops

PSA Master Pastelist, PSA Hall of Fame, IAPS Master Circle
The Color of Light Workshops.

Focusing on color and light, Sally discusses optical mixing of layered color and how to truly see and identify color, especially subtle color. The effects of light on color, composition, and perception, as well as use of different types of light are explored. Painting from costumed models and still life, each student receives individual attention and critiques. Demonstrations, lectures and a slide show are designed to give students tools to achieve intensely beautiful color! (Pastel primarily, all mediums welcome).

March 10–13, 2016

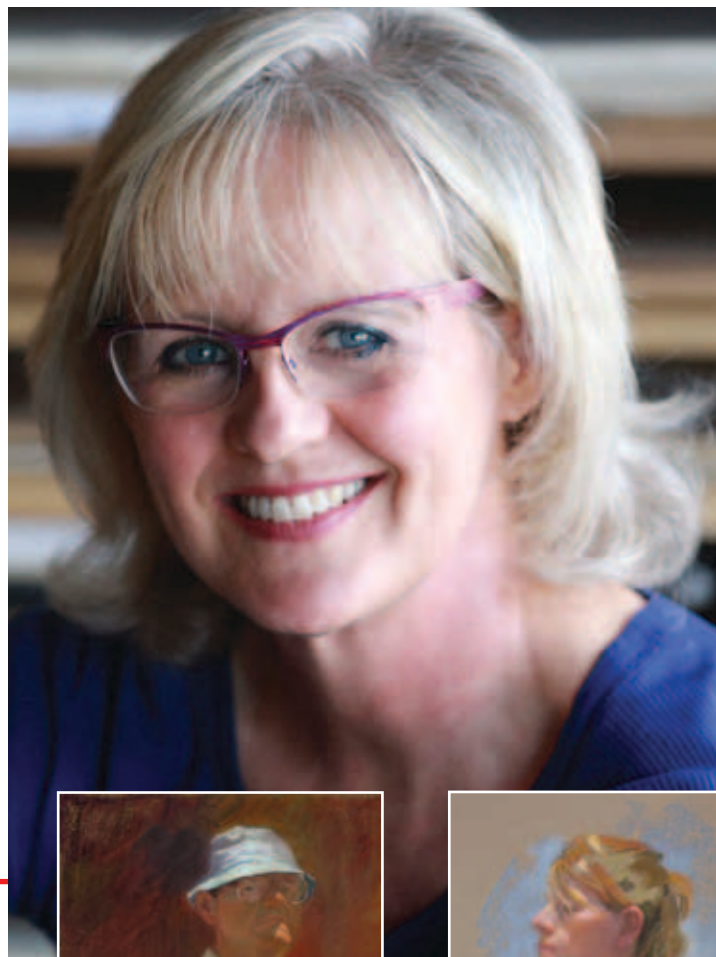
San Clemente Center for the Arts, San Clemente, CA

Four-day Color of Light workshop — Color and light are the focus of the workshop, along with essential elements of strong composition. Open to all skill levels and mediums!

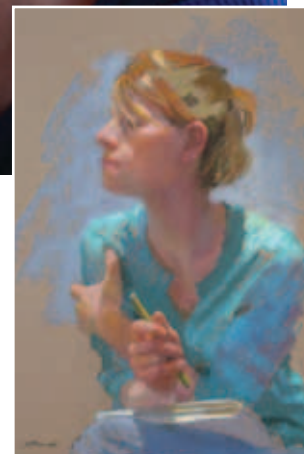
Contact: Heather Rapozo (949) 369-6603
classes@scartsupply.com

October 6–15, 2016

Domaine du Haut Baran, Lot Valley, France



Man with Suspenders, Blue Hat
Pastel on paper 16"x24"



Kari
Pastel on paper 12"x18"

Paint-With-Me and Mentoring Workshop. Paint the Color of Light in the luminous countryside and medieval villages of the Lot River Valley, southwest France. With essential painting instruction as well as personal mentoring, the workshop will be open to painters of all mediums. Personal mentoring will help you explore ideas and goals for your work.

Contact: William or Rosalie Haas, 513-533-0511
hautbaranfrance@gmail.com • www.hautbaran.com
Download flyer (http://sallystrand.com/wp-content/uploads/2012/12/16_Prelim_PaintInFrance_v5.pdf)

For more information: 949-493-6892
info@sallystrand.com or www.sallystrand.com



*The Jewelry Artists of the
San Clemente Art Association invite you to:*

2015 Holiday Jewelry Show

Saturday, November 28, 4 - 9 pm

(during Downtown San Clemente's Puttin' on the Glitz)

&

Sunday, November 29, 9 am - 1 pm

San Clemente Art Gallery

100 North Calle Seville

(on the corner of Avenida Del Mar and Calle Seville)

*Enjoy some refreshments while shopping for unique gifts-
each piece is lovingly made by local artists!*

JEWELRY CASE

Our Jewelry Cases are looking great and the next Jewelry session will start on November 1st, 2015. Changing the Jewelry will be held on Friday 30th of October from 1:00 to 2:30 PM. This will be a Judged Show!

Christmas is around the corner and the "Holiday Jewelry Show" will be held on November 28/29th. Saturday 28th is the same date the San Clemente "Puttin' on the Glitz" starts as listed on our Flyer! I will send more updated News when available!

Katharina Stute
Artisan Show Chairman

SCAA ARTIST BIOGRAPHY AND PHOTO BOOK!

All members can submit a short Biography of their Artwork summarized on an "A" size paper (8x11 in.). The Bio should not exceed 2 pages, which will be placed in the Portfolio Book.

Please send all information to:

SCAA attn: Bio Snap Shot Portfolio
P.O. Box 227, San Clemente, CA 92674

Katharina
Biography and Photo Book Chairman

NEW MEMBERS

Jim Lee
Kelly Roth
Thomas Stipanov

*Thank you to our volunteer gallery sitters.
You are appreciated.*

Kathleen Robison
Linda Dette
Mary Bierce

RE: MEMBERSHIP BOOK

I apologize for cutting short the past presidents list in the book. It was an embarrassing mistake on my part. The following Past Presidents were omitted:

Elizabeth Lacey	1953-1954
Thelma Ruckman	1954-1955, 1955-1956
Fran Hansen	1956-1957, 1960-1961
JoAnn Hager	1957-1958
Ray LaFever	1958-1959
Agnes Buckley	1959-1960
Edith Gunning	1961-1962
Ineze Mendelson	1962-1963
Virginia Ginn	1963-1964, 1964-1965
Edith Loustalet	1965-1966
Jack Berges	1966-1967
Pearl Kettle	1967-1968
Walburga Schauer	1968-1969
Mary J. Sokol	1969-1970
Jean Keenan	1970-1971

Please pray for me not to make that mistake again.

With regrets, George Gooch

THE ART OF SCULPTING with JIM LEE

Three-session (20 Hours) class includes lectures on anatomy, emphasizing bone structure and discussions and demonstrations on expression, age, gender and ethnic differences. Twenty hours of intensive work is spent sculpting a portrait in water-base clay with step-by-step instruction. See my website for more details.

Class includes lectures on bone structure and anatomy.

February 20th	Saturday	9:00 AM—5:00 PM
February 21st	Sunday	9:00 AM—5:00 PM
March 12th	Saturday	9:00 AM—1:00 PM

Cost: \$250.00 (\$50 non-refundable deposit required)

Maximum Class: 8 Students / All materials and tools are provided for class use

Phone: **916.878.0993**
E-mail: **jcllee003@gmail.com**
Website: **www.clayheadsculptures.com**

JENNIFER JOYCE CERAMIC ARTS
Artists Studios of San Clemente
131 Avenida Navarro
San Clemente, CA 92672



FALL JUDGED SHOW – WINNERS & JUDGES

September 20 – October 29, 2015

BEST OF SHOW

Tie	#61	Ruth Yuhas	Jag
Tie	#11	Gwenith McIntire	The Old Trailers

Oil, Acrylic, Landscapes & Seascapes

1 st Place	#3	Jacqueline Price	Walking the Pier
2 nd Place	#57	Steve Kell	Fountain Reflections
3 rd Place	#33	Michael Downey	A Cold Mountain
HM	#59	Willie E. Kyles Sr.	The Pier 2/10/15 6:06 PM
HM	#34	Michael Downey	Sea Duel or Where's Waldo?
HM	#65	Jim Alexander	Village in Nepal
HM	#31	Mary Holt	Lily on Kauai

Oil, Acrylic, Other

1 st Place	#56	Gwenith McIntire	Flowers on Stand
2 nd Place	#74	Lana Perry	Tea & Coffee

Watercolor

1 st Place	#68	Susan Winslow	Splish Splash
2 nd Place	#37	Judi Phillips	Cinque Terre

Portrait and Figure

1 st Place	#67	Alan Nowell	Nancy
2 nd Place	#46	Annette Socci	Adele
3 rd Place	#53	Sheila A. Reiser-Okun	Jungle Prince
HM	#4	Bob Ross	Pensive
HM	#66	Alan Nowell	Figure Study #27
HM	#52	Crisynda Buss	Avery Jane

Photography and Graphic Arts

1 st Place	#6	Bob Ross	Feeding Time
2 nd Place	#8	Ruth Gooch	By Candlelight
3 rd Place	#71	Arpad Petrass	Sunset at the Headlands
HM	#7	Ruth Gooch	The Coffee Grinder
HM	#10	Paul Lawrence	Cuban Taxi

Mixed Media

1 st Place	#85	Susie Cartt	Technicolor
2 nd Place	#62	Ruth Yuhas	NYC Scape
3 rd Place	#84	Connie Beatty-Bean	Dying Star
HM	#86	Susie Cartt	Touch of Gold

Jewelry

1 st Place	#904	Linda Dette	Pop!
2 nd Place	#902	Irene J. Wetsman	Golden Windows

JUDGES

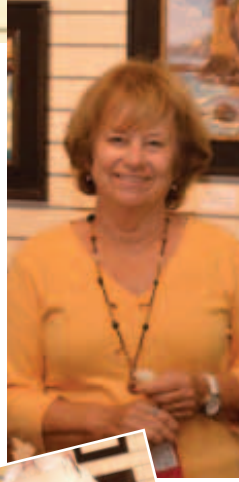
Teri Starkweather
Bruce Vanderwilt

Watercolor
Oils

PUBLIC CHOICE WINNER
Michael Downey



Reception for Fall Judged Show



DATES TO REMEMBER

Saturday, October 31, 10-12 Noon:

Registration, Judged Show

Sunday, November 1, 2-4 pm:

Reception, Judged Show

Wednesday, November 4, 3:30pm:

Executive Board Meeting, Gallery

Sunday, November 8, 3:00 p.m.

Membership meeting, Ole Hanson Rm., Sally Strand, Demonstrator

Saturday, November 28, 4-9pm:

Jewelry Show (During San Clemente's "Puttin' on the Glitz"), Gallery

Sunday, November 29, 9am-1pm:

Jewelry Show, Gallery

Friday, January 8, 2016, Noon – 4 p.m.

Pick up paintings